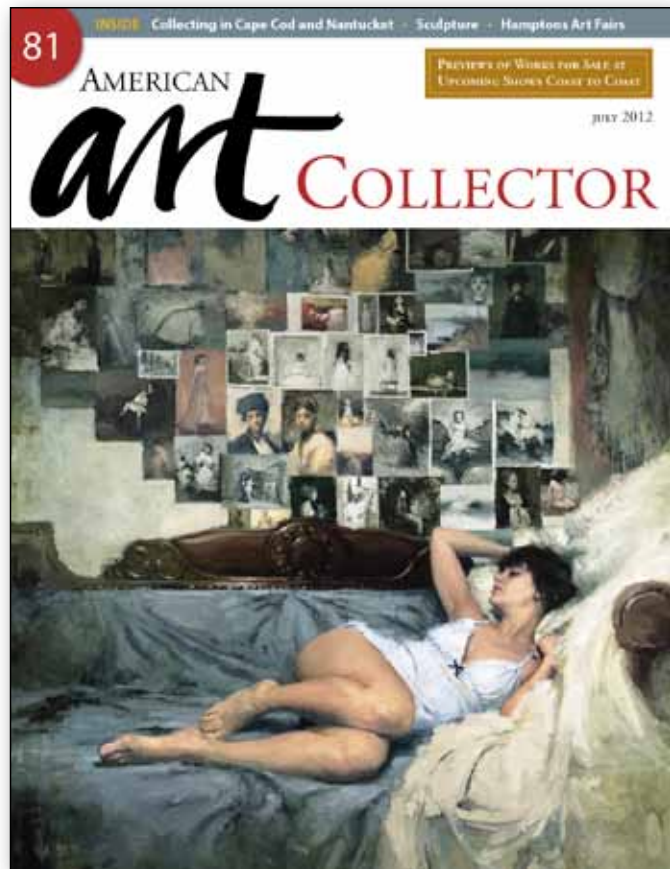


As seen in the
July 2012 issue of

 AMERICAN
art COLLECTOR



UPCOMING SHOW

Up to 24 works

July 6-28, 2012

Roby King Galleries

176 Winslow Way E

Bainbridge Island, WA 98110

(206) 842-2063

• SHOW LOCATION BAINBRIDGE ISLAND, WA



NEAL PHILPOTT

Moments of solitude

As a landscape artist, Neal Philpott seeks to capture moments of solitude and natural settings that are potentially disappearing. Based in the Pacific Northwest, Philpott combs rural landscapes up close and from a distance looking at the land, the trees and water.

"I'm interested in painting all things rural, including vistas, close-ups, farms, forests and water," states Philpott. "I'm recording what our busy society has too little time to appreciate, is transitory, or too quickly changing."

Philpott has a knack for creating a vast landscape on any size canvas. His realistic style draws viewers in to his complex compositions by the initial image and then rewards them up close with subtle details in the paint. With each stroke the artist tries to balance fluidity of the paint against the realism he's trying to achieve.

"I'm learning that I'm attracted to real views, not contrived or imagined," he explains. "I'm trying to get out of my own way and allow the paint to guide me. I'm after something that feels fresh, that feels compelling."

In the oil painting *Extra Fence*, Philpott uses a single-point perspective to pull in the viewer. The piece embodies everything the artist is trying to do: the use of perspective, the layering of value and light, the layering of chroma or hue, and the changing of paint application on far to near objects. Similarly, *Upswell*, an example from his water series, illustrates his efforts toward conveying energy and the power of moving water with composition, color and paint application.

Philpott's sensitivity to reality—not overly stylized views—speaks to his respect for nature and distinguishes his work from other contemporary landscape artists.

"My paintings are views one can see every day. I refrain from reliance on amped-up color or contrived imagery, lighting or paint application," he remarks. "My composition is strong, my colors are fresh and



Upswell, oil on canvas, 50 x 66"



Last Hour, oil on canvas, 20 x 30"



Extra Fence, oil on canvas, 28 x 30"



Morning Glow, oil on canvas, 31 x 54"

homemade tools enable techniques not easily accomplished through the use of a single tool, the brush.” ●

For a direct link to the exhibiting gallery go to  www.americanartcollector.com



Price Range Indicator

Our at-a-glance Price Range Indicator shows what you can expect to pay for this artist's work.

	Small	Medium	Large
2012	\$950	\$1,900	\$5,000