



DAVID FOLEY & NEAL PHILPOTT

# Characteristics of nature

Contemporary landscape painters **David Foley** and **Neal Philpott** convey the characteristics of nature on canvas using distinctly unique styles. Both artists' works offer engaging scenes from a distance while up close the images reward viewers with abstract qualities.

"Stylistically we paint differently but we end up at the same place in that close-up it becomes abstraction. David's work has a very kinetic feel to it," remarks Philpott.

Moreover, Foley adds, "We both create subtleties. Neal creates with similar subtleties using broader color areas and I create the same subtleties using color in smaller areas, creating our respective ends."

Foley's new series, *Above Gothic*, is a continuum of fractal visuals and energetic rhythm, but rather than focusing on trees the paintings feature more expansive landscapes.

"With less trees it turns out there's more openness to it and the trees tend to be more individual, anthropomorphic...so you look at them a bit longer," he says. "The newer work is more delineated and more organic with the rocks."

Foley maintains the energetic rhythm in these expansive landscapes with equal use of brushwork and

mark-making and flinging paint using different sticks and knitting needles of varied sizes.

"I am trying to create a sense of the unfamiliar, to inspire a feeling of awe," he says. "People will stand in front of one of my paintings and say, 'I like this...I really don't even know why'. That's good. I want them to enjoy looking at it for a very long time."

Known for the interplay of light and shadow in his realistic paintings of rural vistas—both far and near—Philpott is concurrently exploring water. With his recent pieces *Roaring River*, *Upswell*, and *Shadow Flow*, Philpott challenged himself to paint the transparent subject in more detail and in a larger format. Featuring all water scenes, Philpott says his new work illustrates the theme of close inspection, in particular *Roaring River* and *Upswell*.

"It's more about conveying that sense of movement of water and how it interacts with the stationary aspect of the landscape," Philpott comments.

Sugarman-Peterson Gallery will host an opening reception for this two-man show Friday, August 1, from 5 to 7:30 p.m. The show will be on view at the gallery through August 21. ●

1  
**Neal Philpott**,  
*Roaring River*,  
oil, 28 x 54"

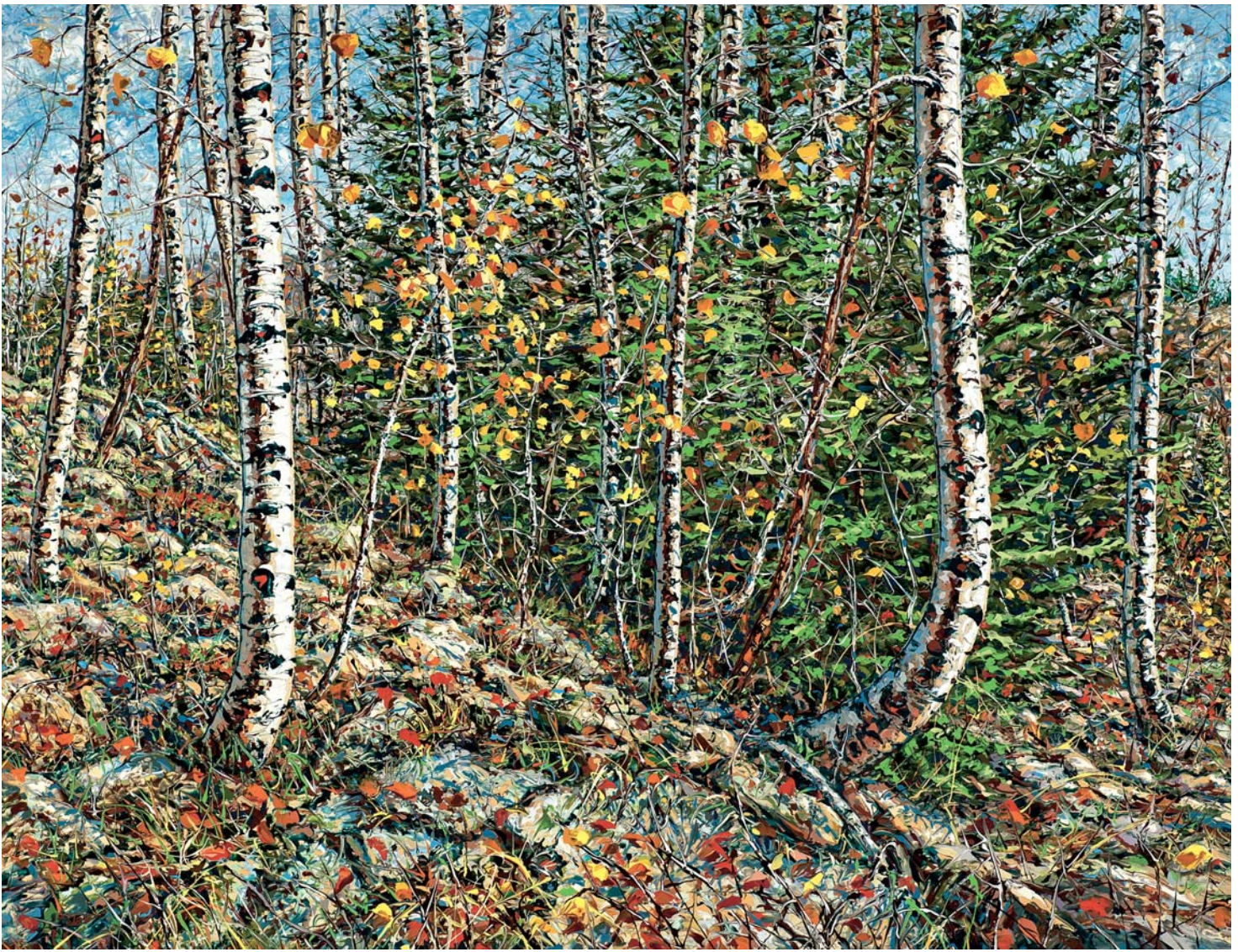
2  
**David Foley**,  
*Above Gothic 3*,  
acrylic, 40 x 52"

3  
**Neal Philpott**,  
*Upswell*, oil, 50 x 66"

4  
**David Foley**,  
*Above Gothic 5*,  
acrylic, 46 x 50"







2



3



4