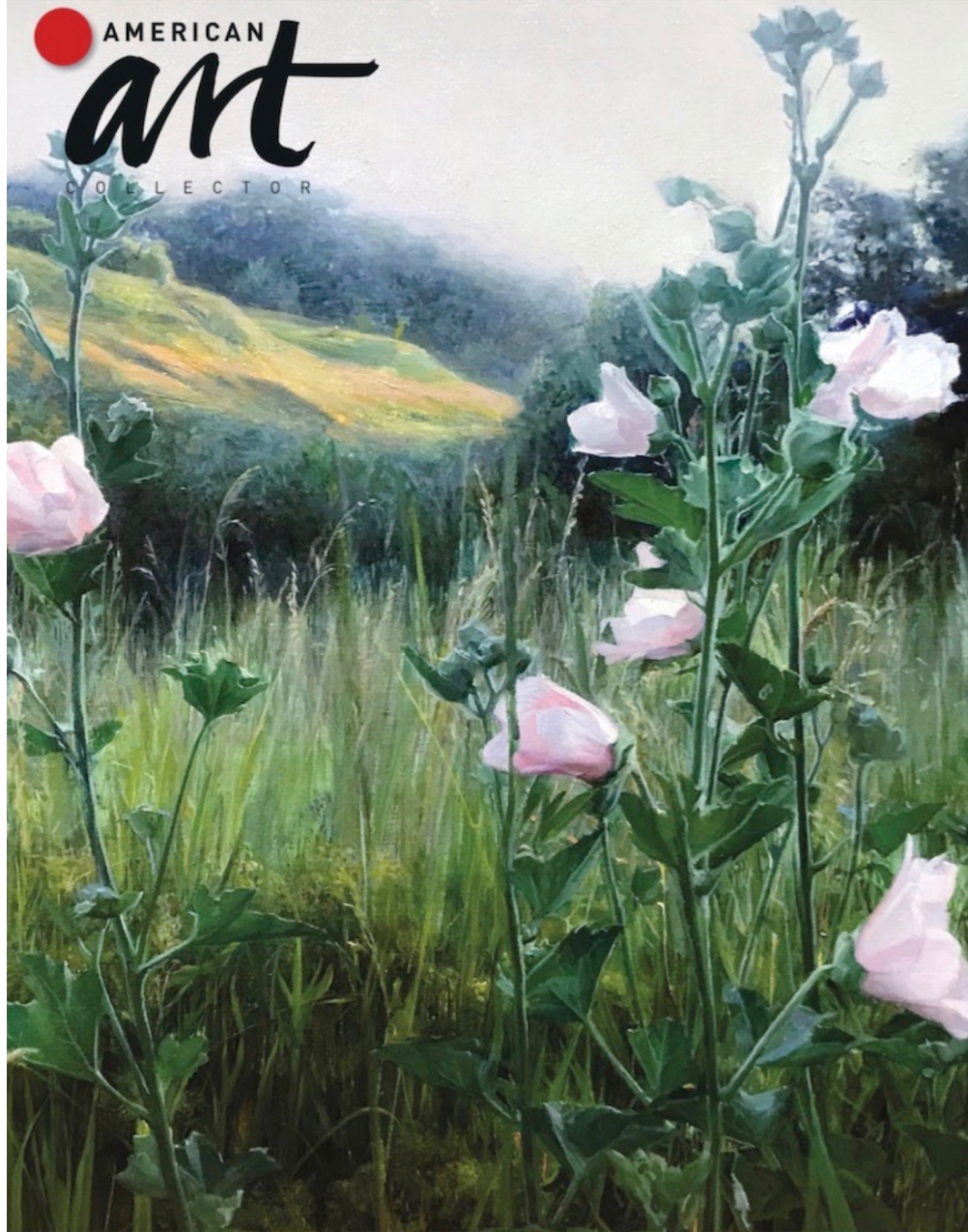
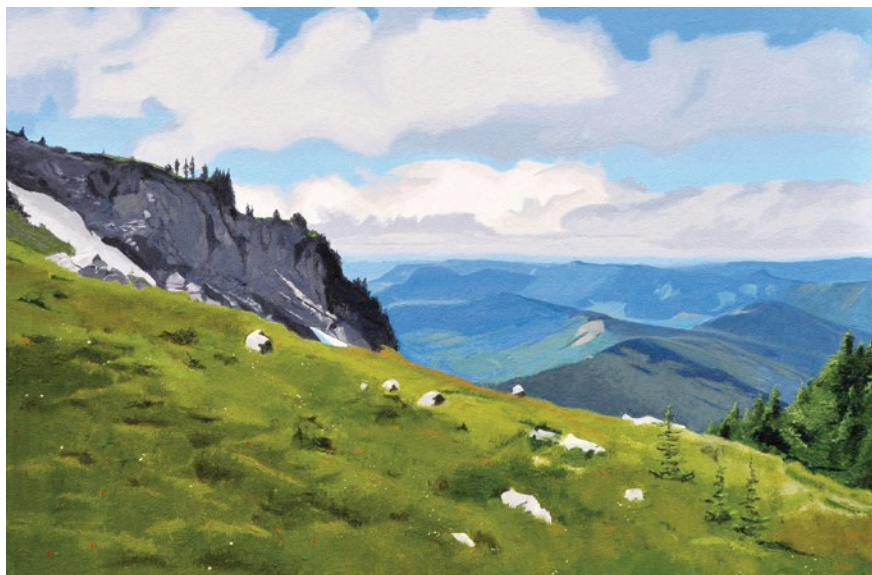


PREVIEWS OF WORK FOR SALE AT UPCOMING SHOWS COAST TO COAST

SEPTEMBER 2018 ISSUE 155

AMERICAN
art
COLLECTOR





1
Neal Philpott,
At Altitude, oil on
canvas, 20 x 30"

2
Neal Philpott,
First Up, oil on
canvas, 10 x 40"

3
Neal Philpott,
Quarry Cut, oil on
canvas, 30 x 40"

NEAL PHILPOTT

Oregon City, OR, (503) 407-9263
neal.philpott@me.com
www.nealphilpott.com

Originally from Michigan, **Neal Philpott** studied painting at the Center for Creative Studies in Detroit. He has lived in the Northwest since 1988 and currently paints full time from his Oregon City, Oregon, studio.

"I paint an interpretation of what I see as a way to capture how a transitory slant of light transforms



an everyday view into something special," Philpott describes. "I try to capture how light enlivened these scenes and make them transcendent for a brief

moment. Preserving a momentary scene in paint saves that moment for me."

Philpott is drawn to high-contrast images, so he often has strong shadows running perpendicular through the picture plane of his landscape oil paintings. He says, "My reward for painting is to see how overlapping patterns of texture and color come together to capture the whole. I like variety, so most of my paintings fall into one of four categories: vistas, roads, water and nature close-ups."

He is currently revisiting old layering techniques to see how they meld with his

current quicker approach. He uses standard proportion canvas or board for much of his work, but lately has been intrigued by panoramas, exploring 1:2, 1:3 and 1:4 proportions.

Philpott is represented by Gallery 903 in Portland; Kneeland Gallery in Ketchum/Sun Valley, Idaho; Roby King Gallery in Bainbridge Island, Washington; and Sugarman-Peterson Gallery in Santa Fe, New Mexico.

He has a two-person show at Roby King Gallery in October 2018 and a show at Gallery 903 in August 2019.

